

ALT

ELECTROMECHANICAL BARRIER WITH DOUBLE BUILT-IN FLASHING LIGHT FOR BAR FROM 3 TO 6 m, 24 Vdc



PLUS

Maximum speed:

- up to 1 second for ALT324KF
- up to 3,5 seconds for ALT424K
- up to 6 seconds for ALT624K

FASTLINE

Double spring (6 m model) to counter balance movement and make it more fluent

Anti-UV rays epoxy power coating

Robust gears and levers for reliable functioning over time

Encoder for obstacle detection and immediate run inversion

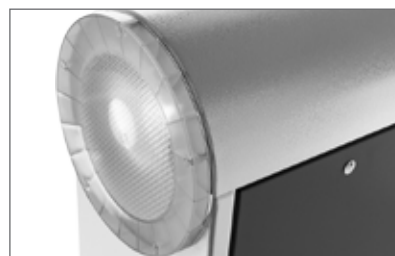
For intensive use, for private and public solutions

Energy saving mode

Universal box: bar can be installed both right or left

Possibility to set different speed in opening and closing motion

With 24 Vdc control unit CT102 24, (pag. 140 for technical details)



Double Led flashing light



Metallic gear + shock resistant motor (ALT624K)








102 24 control unit



New bar (6m + 8 m)

MODELS

CODE	DESCRIPTION	PCS PALLET
 ALT324KF	Barrier body, 24 Vdc motor, with control unit in box, with encoder, double built-in led flashing light. For 3 m bar (1 pc)	 5
 ALT424K	Barrier body, 24 Vdc motor, with control unit in box, with encoder, double built-in led flashing light. For 4 m bar (1 pc)	6
 ALT624K	Barrier body, 24 Vdc motor, with control unit in box, with encoder, double built-in led flashing light. For 6 m bar (1 pc)	5

		ALT324KF	ALT424K	ALT624K
MECHANICAL DATA				
torque	Nm	40	200	305
working cycle	%	50	80	80
opening time at 90°	sec	1	3,5	6/*12
ELECTRICAL DATA				
control board		CT102 24F 	CT102 24	CT102 24
power	Vac	230	230	230
consumption	A	1,6	1,3	1,3
absorbed power	W	330	300	300
integrated lights		yes	yes	yes
GENERIC DATA				
protection degree	IP	54	54	54
dimensions (L - D - H)	mm	450 - 280 - 1188	360 - 220 - 1110	450 - 280 - 1188
weight	kg	62	47	67
working temperature	°C	-20 + 55	-20 + 55	-20 + 55
maximum bar length	m	3	4	6 *(8 mt)

* with 8 m bar

ACCESSORIES

ACCESSORIES ALT 3KF



AST3F
Aluminum tubular
bar L=3 m Ø
60 mm (without
accessories)

PC 1

ACCESSORIES ALT 4K



AS4
Aluminum bar
L=4 m 60x30 mm

PC 1



AS-4J
2+2 m aluminum
bar 60x30x2 +
joint

PC 1



AS-SNO3
Joint for articula-
ted rods (max. L. 3
m) preassembled.
Only for ALT424K

PC 1



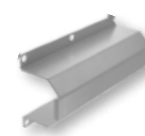
AST4
Aluminum tubular
bar L=4 m Ø 60
mm (without
accessories)

PC 1



AST5
Aluminum tubular
bar L=5 m Ø 60
mm (without
accessories)

PC 1



ATAST60X
Connection for
bars AST Ø 60 mm

PC 1



CP-BR
Anchorage plate
with rag bolts

PC 1



PROF
Flexible rubber
profile, 8 m and
plug set for AS4

PC 1

ACCESSORIES ALT 6K



ASTL6
Aluminum bar
L=6 m Ø 90 mm

PC 1



ASTL6J
3+3 m aluminum
bar, Ø 90 mm +
joint

PC 1



ASTL8
4,2+4,2 m
aluminum bar,
Ø 90 mm + joint +
springs

PC 1



AST8
Round telescopic
aluminum boom
L max=9 m Ø 60/90
mm, with counter-
weight, joints
and fixed support
(without acces.)

PC 1



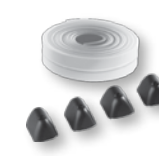
CP-BR6
Anchorage plate
with rag bolts

PC 1



PROF6
Flexible rubber
profile, 12 m and
plug set

PC 1



PROF8
Flexible rubber
profile, 16 m and
plug set

PC 1

ACCESSORIES



APFX
Fixed support RAL
7047

PC 1



APM
Mobile support
RAL 9010

PC 1



CTLIGHT
Control unit for
KLIGHT

PC 1



KLIGHT4
Kit led lights for 4
m bar

PC 1



KLIGHT6
Kit led lights for 6
m bar

PC 1



KLIGHT8
Kit led lights for 8
m bar

PC 1



RIMAE
Magnetic sensor,
one coil, two
outputs (impulse
and presence)

PC 1



SKIRT2
Kit aluminum
fence, length
1,7 m

PC 1



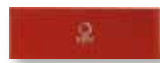
KBP
Battery back-up kit

PC 1



KITFIXBATT
Fixing batteries
brackets

PC 1



AD
Red reflecting
adhesive
stripes

PC 10